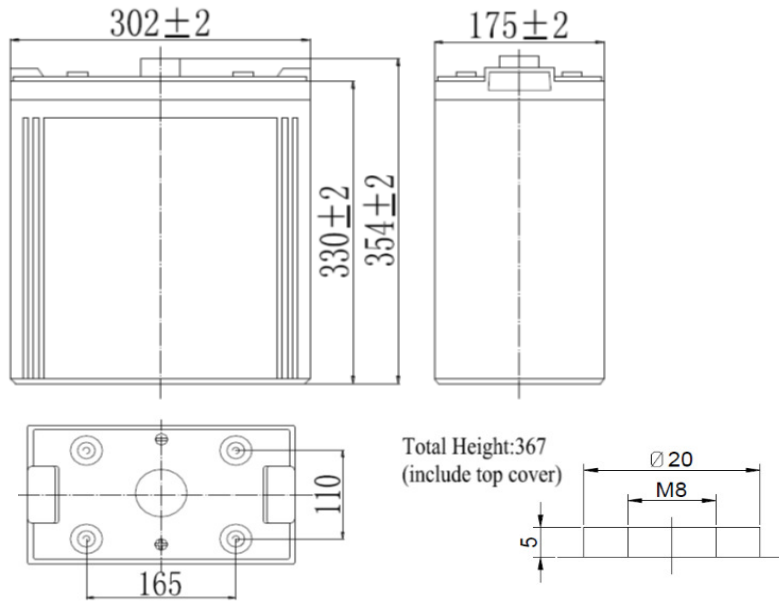


SUNLIGHT SVT 2V - 600Ah

AGM VRLA Battery

Features & Benefits

- Non-spillable maintenance free product
- High Quality and High Reliability
- Wide range of operating temperature
- Fast and easy installation
- Low self discharge
- Long service life, float or cyclic applications
- Female M8 brass terminals
- IEC 60896-21 & 22, EN 50272-2 compliant
- Can be mounted in any orientation (not upside down)
- Fully recyclable product



Specifications

Nominal Voltage	2 V	
Number of cells	1	
Design Floating Life (20°C)	15 years	
Dimensions	Length	302 mm
	Width	175 mm
	Height	330 mm
	Total Height	367 mm
Weight	35 kg	
	10 hours rate (1.80)	600 Ah
	5 hours rate (1.75)	535 Ah
Nominal Capacity	1 hour rate (1.65)	355 Ah
	Internal Resistance (fully charged, 25°C)	
		0.45 mOhm
Self Discharge	approx. 3% per month at 25°C	
Nominal Operating Temperature	25°C	
Operating Temperature range	Discharge	-15°C to 50°C
	Charge	-10°C to 50°C
	Storage	-20°C to 50°C
Float Charging Voltage	2.25 to 2.30 V/cell at 25°C	
	Temperature compensation -18mV/°C	
Maximum charging current	120 A	
Maximum discharge current	4000 A (5 sec.)	

Performance Data

Discharge Constant Current at 25°C (Amperes)

End Voltage V/cell	15min	30min	1h	2h	3h	4h	5h	6h	8h	10h	20h	24h
1.60 V	810	540	360	219	156	125	109	93.6	73.4	61.1	32.1	27.8
1.65 V	791	529	355	218	155	125	108	93.1	73.0	61.0	32.0	27.7
1.70 V	761	513	346	216	154	124	108	92.4	72.5	60.8	31.9	27.7
1.75 V	735	501	339	213	153	123	107	91.8	72.0	60.4	31.7	27.5
1.80 V	697	482	328	207	148	119	104	89.0	69.8	60.0	31.5	27.3

Discharge Constant Power at 25°C (Watts)

End Voltage V/cell	15min	30min	1h	2h	3h	4h	5h	6h	8h	10h	20h	24h
1.60 V	1482	1010	684	423	306	246	215	184	146	122	64.1	55.9
1.65 V	1447	990	674	421	304	244	213	183	145	121	64.0	55.8
1.70 V	1393	959	657	417	302	243	212	182	144	121	63.8	55.6
1.75 V	1346	936	644	411	300	241	210	181	143	120	63.4	55.3
1.80 V	1275	902	624	400	291	234	204	175	139	119	63.0	54.9

Note: The above characteristics data can be obtained within three charge/discharge cycles.