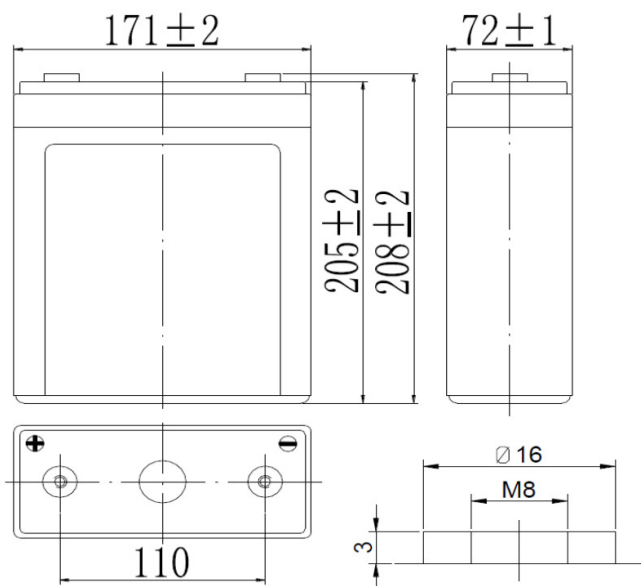


# SUNLIGHT SVT 2V - 100Ah

AGM VRLA Battery

## Features & Benefits

- Non-spillable maintenance free product
- High Quality and High Reliability
- Wide range of operating temperature
- Fast and easy installation
- Low self discharge
- Long service life, float or cyclic applications
- Female M8 brass terminals
- IEC 60896-21 & 22, IEC 62485-2 compliant
- Can be mounted in any orientation (not upside down)
- Fully recyclable product



## Specifications

Nominal Voltage	2 V
Number of cells	1
Design Floating Life (20°C)	15 years
Dimensions	Length 171 mm
	Width 72 mm
	Height 205 mm
	Total Height 208 mm
Weight	5.3 kg
	10 hours rate (1.80) 100.0 Ah
	5 hours rate (1.75) 89.0 Ah
Nominal Capacity	1 hour rate (1.65) 59.2 Ah
	Internal Resistance (fully charged, 25°C)
Self Discharge	approx. 3% per month at 25°C
Nominal Operating Temperature	25°C
Operating Temperature range	Discharge -15°C to 50°C
	Charge -10°C to 50°C
	Storage -20°C to 50°C
Float Charging Voltage	2.25 to 2.30 V/cell at 25°C
	Temperature compensation -18mV/°C
Maximum charging current	20 A
Maximum discharge current	800 A (5 sec.)

## Performance Data

### Discharge Constant Current at 25°C (Amperes)

End Voltage V/cell	15min	30min	1h	2h	3h	4h	5h	6h	8h	10h	20h
1.60 V	135	90.0	60.0	36.6	26.0	21.0	18.2	15.6	12.2	10.2	5.34
1.65 V	132	88.2	59.2	36.4	25.8	20.8	18.0	15.5	12.2	10.2	5.34
1.70 V	127	85.6	57.6	36.0	25.6	20.6	17.9	15.4	12.1	10.1	5.32
1.75 V	123	83.4	56.4	35.4	25.3	20.4	17.8	15.3	12.0	10.1	5.28
1.80 V	116	80.4	54.8	34.6	24.8	19.9	17.3	14.8	11.6	10.0	5.26

### Discharge Constant Power at 25°C (Watts)

End Voltage V/cell	15min	30min	1h	2h	3h	4h	5h	6h	8h	10h	20h
1.60 V	247	168	114	70.6	50.6	41.0	35.8	30.8	24.4	20.2	10.7
1.65 V	242	165	112	70.2	50.2	40.8	35.6	30.6	24.2	20.2	10.7
1.70 V	232	160	109	69.4	50.0	40.4	35.4	30.4	24.0	20.2	10.6
1.75 V	224	156	107	68.4	49.2	40.2	35.0	30.2	23.8	20.0	10.6
1.80 V	212	150	104	66.8	48.4	39.0	34.0	29.2	23.2	20.0	10.5

Note: The above characteristics data can be obtained within three charge/discharge cycles.