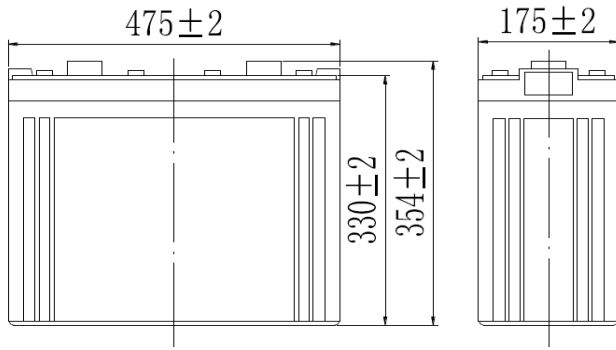
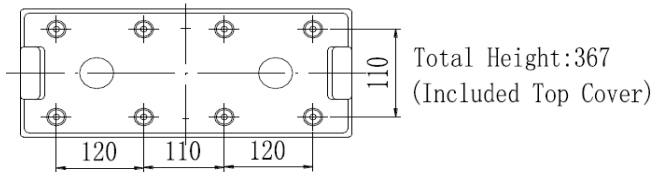


# SUNLIGHT SVT 2V - 1000Ah

AGM VRLA Battery

## Features & Benefits

- Non-spillable maintenance free product
- High Quality and High Reliability
- Wide range of operating temperature
- Fast and easy installation
- Low self discharge
- Long service life, float or cyclic applications
- Female M8 brass terminals
- IEC 60896-21 & 22, EN 50272-2 compliant
- Can be mounted in any orientation (not upside down)
- Fully recyclable product



## Specifications

Nominal Voltage	2 V
Number of cells	1
Design Floating Life (20°C)	15 years
Dimensions	Length 475 mm
	Width 175 mm
	Height 330 mm
	Total Height 367 mm
Weight	61 kg
Nominal Capacity	10 hours rate (1.80) 1010 Ah
	5 hours rate (1.75) 890 Ah
	1 hour rate (1.65) 591 Ah
Internal Resistance (fully charged, 25°C)	0.28 mOhm
Self Discharge	approx. 3% per month at 25°C
Nominal Operating Temperature	25°C
Operating Temperature range	Discharge -15°C to 50°C
	Charge -10°C to 50°C
	Storage -20°C to 50°C
Float Charging Voltage	2.25 to 2.30 V/cell at 25°C
	Temperature compensation -18mV/°C
Maximum charging current	200 A
Maximum discharge current	7500 A (5 sec.)

## Performance Data

### Discharge Constant Current at 25°C (Amperes)

End Voltage V/cell	30min	1h	2h	3h	4h	5h	6h	8h	10h	20h	24h
1.60 V	900	600	365	260	209	182	156	122	102	53.4	46.3
1.65 V	882	591	363	259	208	180	155	122	102	53.3	46.2
1.70 V	855	576	360	257	206	179	154	121	102	53.2	46.1
1.75 V	834	565	355	255	205	178	153	120	101	52.7	45.8
1.80 V	804	547	346	247	199	173	148	116	101	52.5	45.5

### Discharge Constant Power at 25°C (Watts)

End Voltage V/cell	30min	1h	2h	3h	4h	5h	6h	8h	10h	20h	24h
1.60 V	1683	1140	705	510	410	358	307	244	203	107	93.1
1.65 V	1649	1123	701	507	407	356	306	242	202	107	92.9
1.70 V	1599	1094	695	503	405	353	304	240	202	106	92.6
1.75 V	1560	1073	684	500	402	351	301	239	200	106	92.1
1.80 V	1503	1040	667	485	390	340	292	232	199	105	91.5

Note: The above characteristics data can be obtained within three charge/discharge cycles.