

Sunlight RES SOPzV Key Advantages



Advanced cost-effective energy storage solution ideal for cyclic applications where demand for **no water refilling** and **long cycle life is essential**.



Maintenance Free
Operation



Long Cycle Life
up to 2400 cycles at 50% DoD



Operational
Safety



Modular Solution
**Complete System Installation
Available as Option**

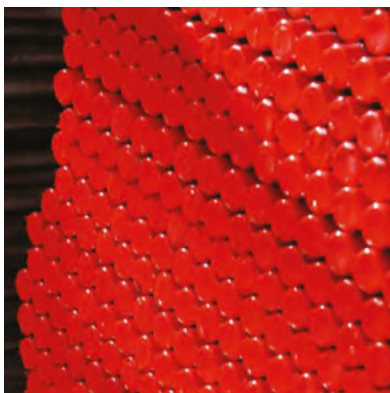


High Capacity
Performance



Fully Recyclable Product
Circular Economy Enabler

The Sunlight **Red Lead Advantage**



Features

99.99%
pure lead
for Red Lead
production

100%
Red Lead in our
positive plates
through dry filling
process

100%
plates weight
control and
data statistical
evaluation

Benefits

Longer life
span of batteries

Full Capacity
within the first
3-5 cycles

Minimized
self-discharge

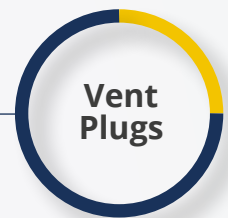
Sustained
performance
throughout
battery lifetime

Batteries with GEL Electrolyte Main Characteristics

Valve Regulated lead-acid batteries with tubular plates and GEL electrolyte for Renewable Energy Storage applications



Specially designed pole for perfect sealing



Pressure relief valve with flame arrestor for increased safety



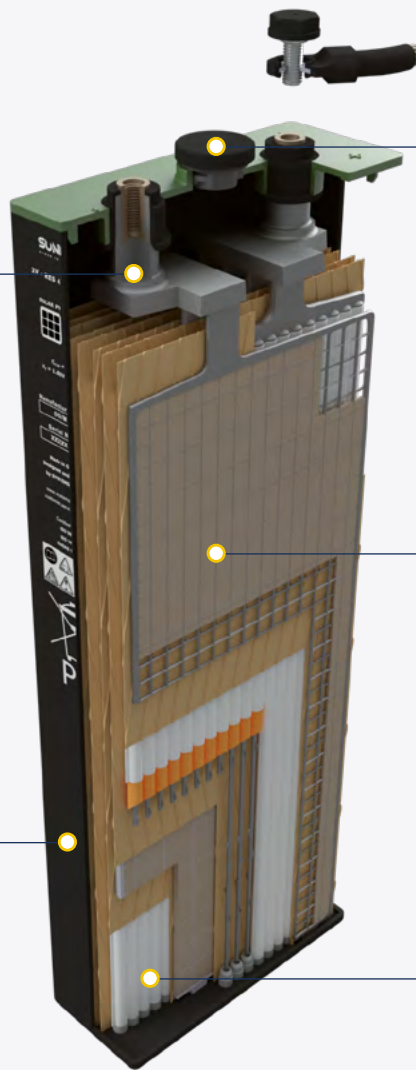
In GEL form, maintenance-free operation without watering needs



High impact resistant Polypropylene



Performance and durability with ultrasonic welding of bottom bar

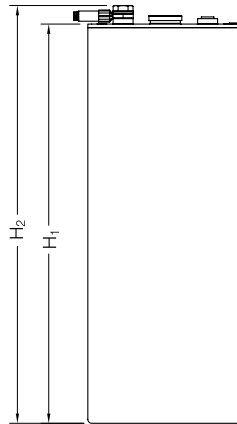


Product Range

Model	Voltage [V]	Rated Capacity at 20°C (68°F)			Dimensions				Weight [kg (lb)]	Terminal Details Number of Poles
		C ₁₂₀ / 1,85V [Ah]	C ₄₈ / 1,80V [Ah]	C ₁₂ / 1,80V [Ah]	Length - L [mm (in)]	Width - W [mm (in)]	Height - H1 [mm (in)]	Height - H2 [mm (in)]		
RES 2 SOPzV 150	2	150	145	123	198 (7.80)	47 (1.85)	343 (13.50)	367 (14.45)	9.0 (19.8)	2
RES 3 SOPzV 225	2	225	218	184	198 (7.80)	65 (2.56)	343 (13.50)	367 (14.45)	12.7 (28.0)	2
RES 2 SOPzV 280	2	284	279	236	198 (7.80)	47 (1.85)	568 (22.36)	592 (23.31)	15.4 (34.0)	2
RES 3 SOPzV 425	2	426	419	354	198 (7.80)	65 (2.56)	568 (22.36)	592 (23.31)	22.0 (48.5)	2
RES 4 SOPzV 565	2	568	558	473	198 (7.80)	83 (3.27)	568 (22.36)	592 (23.31)	28.7 (63.3)	2
RES 5 SOPzV 710	2	710	698	591	198 (7.80)	101 (3.98)	568 (22.36)	592 (23.31)	35.3 (77.8)	2
RES 6 SOPzV 850	2	852	837	709	198 (7.80)	119 (4.69)	568 (22.36)	592 (23.31)	42.1 (92.8)	2
RES 7 SOPzV 990	2	994	977	827	198 (7.80)	137 (5.39)	568 (22.36)	592 (23.31)	48.8 (107.6)	2
RES 8 SOPzV 1135	2	1136	1117	945	198 (7.80)	155 (6.10)	568 (22.36)	592 (23.31)	55.5 (122.4)	2
RES 7 SOPzV 1190	2	1190	1171	982	198 (7.80)	137 (5.39)	713 (28.07)	737 (29.02)	60.0 (132.3)	2
RES 8 SOPzV 1360	2	1360	1338	1123	198 (7.80)	155 (6.10)	713 (28.07)	737 (29.02)	68.1 (150.1)	2

M10 Terminal type (applicable to all models).

All dimensions and weights shown are subject to manufacturing tolerances.



Metallic Trays

Battery trays for complete system solutions in 12V, 24V and 48V for trouble free installation



Applications

Developed for Renewable Energy Systems & Demanding Cyclic Applications



Residential Installations,
Off-Grid Power Systems

Infrastructure PV Systems



Remote Telecom Stations



Water Pumping Systems



Traffic Signal Systems




Road Lighting



IEC 60896-21/ IEC 60896-22/ IEC 62485-2/ IEC 61427
ISO 9001/ ISO 14001/ ISO 45001

SUNLIGHT
POWER IS KNOWLEDGE



 www.akuval.com
 akuval@akuval.com
 96 134 39 50